

FRAMING PLAN

NOTE:

ALL DIMENSIONS ARE HORIZONTAL.
ALL BOLTS TO BE 7/8" A325, TYPE I (except @ form bracket holes)

FORM BRACKET HOLES

Form bracket holes are to be plugged with 5/8" x 1-1/2" carriage bolts. Heads to be on outside. Holes to be completely covered.

SPLICE NOTE

In order to maintain the 0-1/4" gap shown, the webs and flanges are to be (with the use of mechanical guide) at the time of shop assembly of field splices. Holes are to be drilled full size from the solid with all material in exact relative field position.

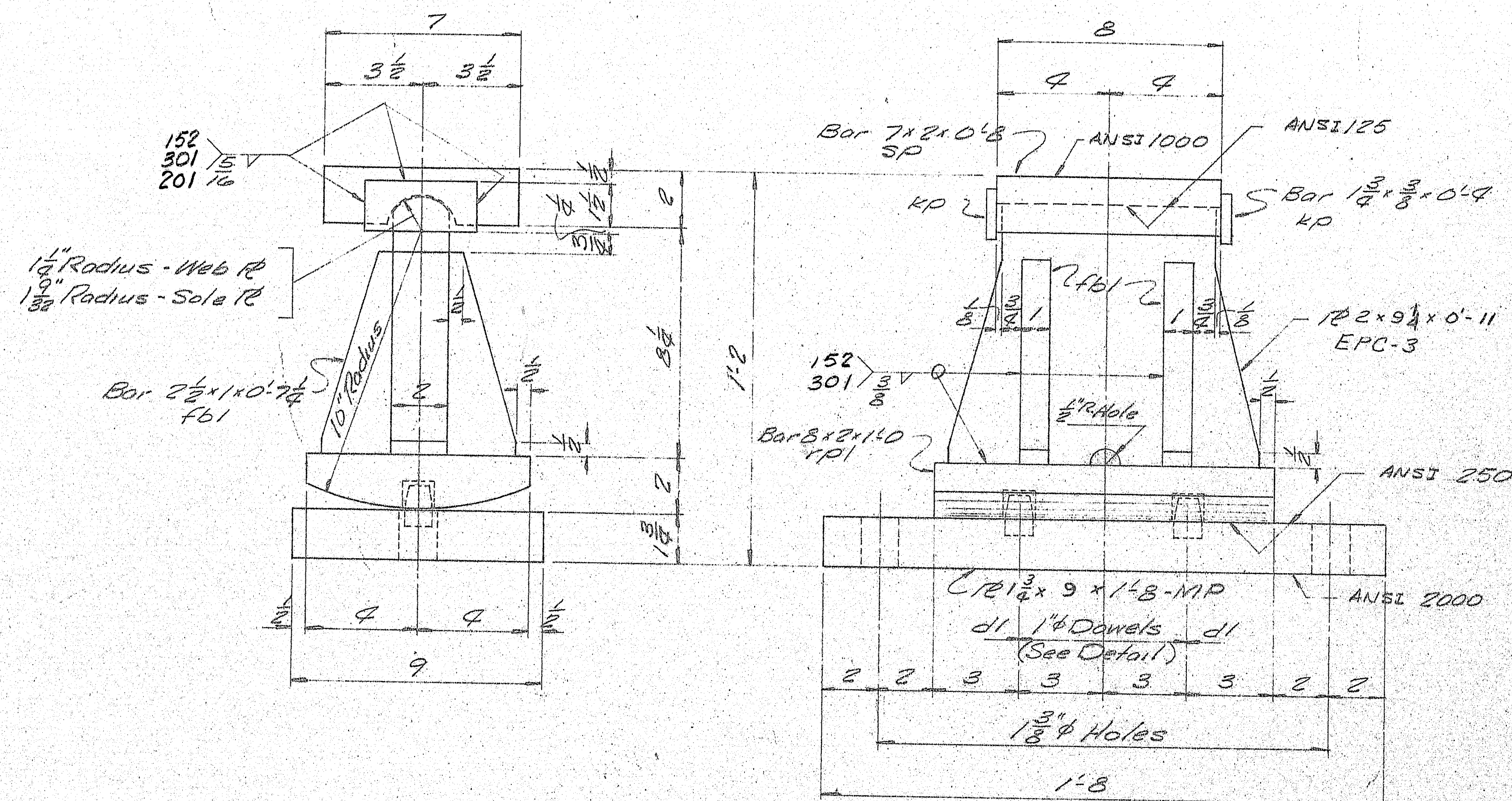
Welding on filler plates or splice plates is allowed; except that web splice plates and fillers may be tack welded for drilling as follows: no tack weld closer to flange than 1/6 of web width, or longer than 3", or spaced less than approximately 12" on center. All tack welds will be removed and web surface ground flush. Bolt for shipment.

ITEM No. 504.70
PROJECT No. I-IG-95-9(82)

APP. 1-2-79

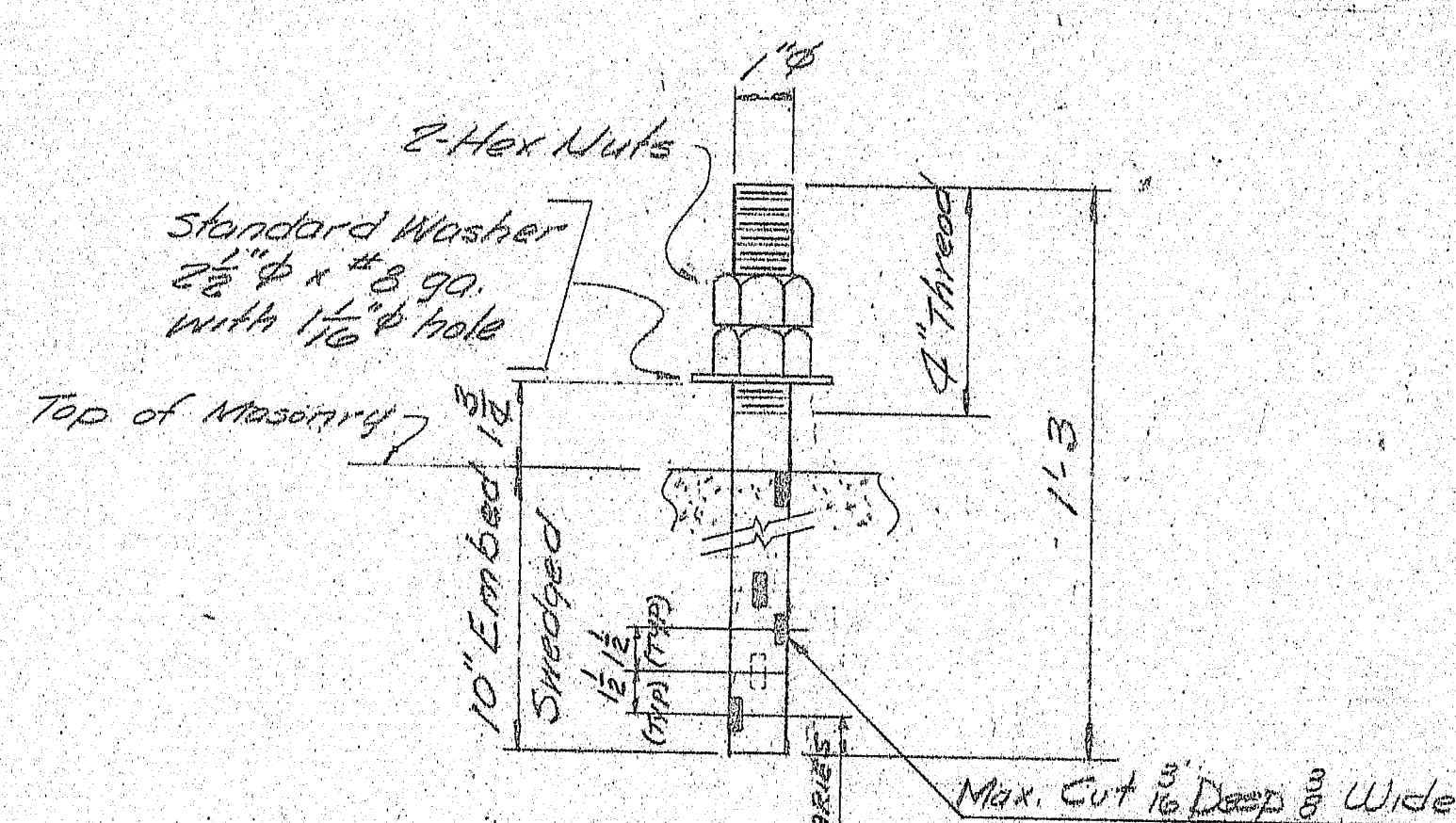
FRAMING PLAN			
PRINT DIST.	1/14-78 A	Bancroft & Martin Inc.	
2/19-78 FA	1/2-79 B	South Portland, Maine 04106	
3/10-79 F&F	1/10-79 F&F	JOB: I-95 OVER RTE. 159 & B&A RAILROAD, ISLAND FALLS, ME	
		CUSTOMER: CIAMBRO CORP.	
		DESIGNER: STATE OF MAINE DEPT. OF TRANS.	
REV.		ORDER NO.	JOB NO.
CHECKED			
DRAWN	9/26/78 BB		

160-43



EXPANSION PEDESTAL EPC-3

12 REQD.

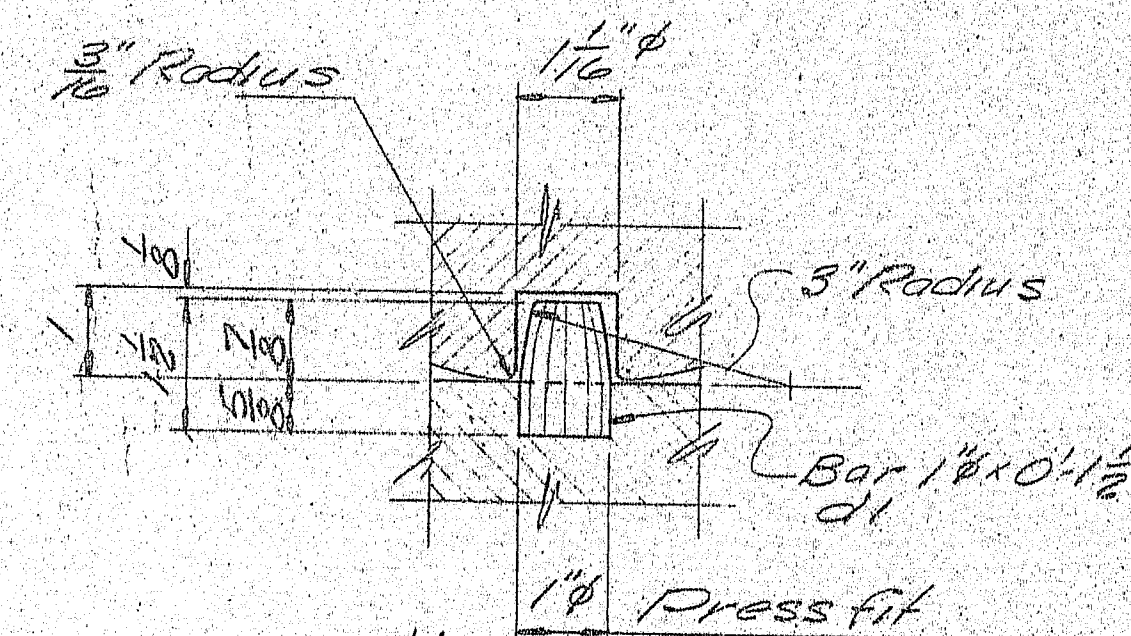


ANCHOR BOLT ABI

24 REQD.

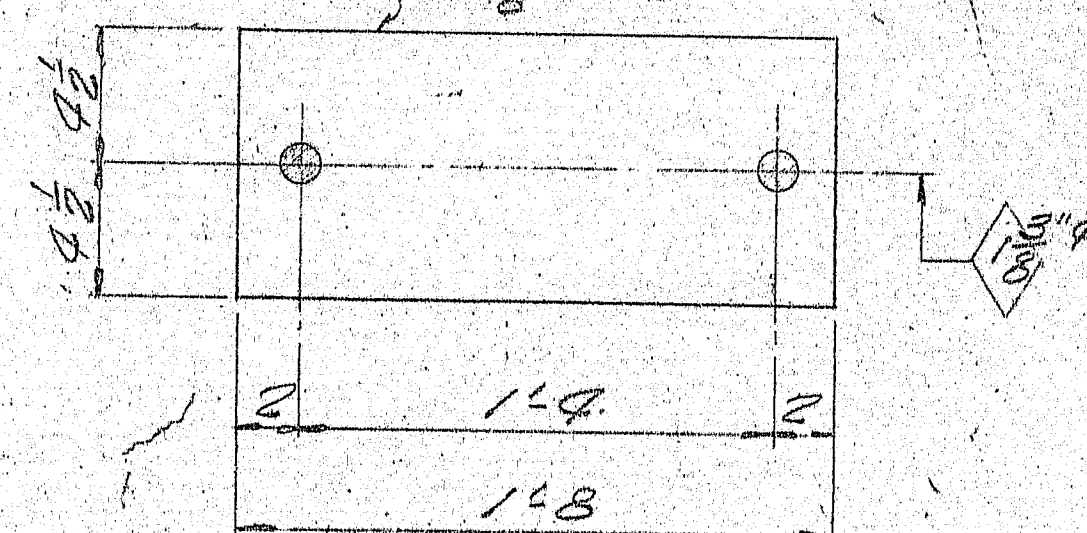
PAINT NOTE:

No paint on top of sole plates "spi" and 1" down from top on sides, coat with boiled linseed oil.
No paint on surface with ANSI 125 finish, coat with mixture of white lead and tallow.
No paint on Anchor Bolts - Oil Ends.
Masonry is a bearing surface of expansion bearing rollers shall receive 2 coats of shop paint.



DOWEL DETAIL

PREFORMED PAD
9 x 8 x 1 1/8



PREFORMED PAD

FPI 12 REQD.

SHIP		BILL OF MATERIAL S78-60					DWG. NO. 51-1	
MARK	NO.	MARK	SHAPE	LENGTH		WT.	ITEM NO.	REMARKS
ERC-3	12		12 x 9 1/4	0	11		2-D	See Detail 2-B
MPI	12		12 1/4 x 9	1	8		2-M	See 1-B 58 x 1 1/4 17 #411L 7261
	12	1 PD	Bar 8 x 2	1	0			
SPI	12		Bar 7 x 2	0	8			
	48	161	Bar 2 1/2 x 1	0	7 1/2			
	24	d1	Bar 1 1/2 x 1	0	1 1/2			
	24	KD	Bar 1 3/4 x 3/8	0	9			
ABI	24		Bar 1 1/2	1	3			SWEDGE
	48	shop	1 1/2 Hex. Nut					A307
Field	24		1 1/2 washer					STD. WASH. 2 1/2 O.D. x 1 1/2 hole
FPI	12		Pad 9 x 8	1	8			Preformed Pad REQ# 11619
ITEM 504.70								
PROJECT NO. 16-95-9(82)								

Bearing material to be ASTM A36

WELDING ELECTRODE: See Welding Procedures
SHOP CONNECTIONS: Welded
FIELD CONNECTIONS: Welded
HOLES: As noted
PAINT: Basic Lead Silica Chromate
orange & as noted.
BLAST CLEAN: SSPC-SP6

FINAL APP. 1-2-79
APPROVED: 12-13-78
2P 11-14-78 A
2P 12-19-78 FA
3 1-2-79 SHOP
3 1-10-79 F&E

BEARING PEDESTAL DETAIL

Bancroft & Martin Inc.
South Portland 1, Maine

I-95 NB OVER OLD RTE. 159
& BARR
ISLAND FALLS, ME.

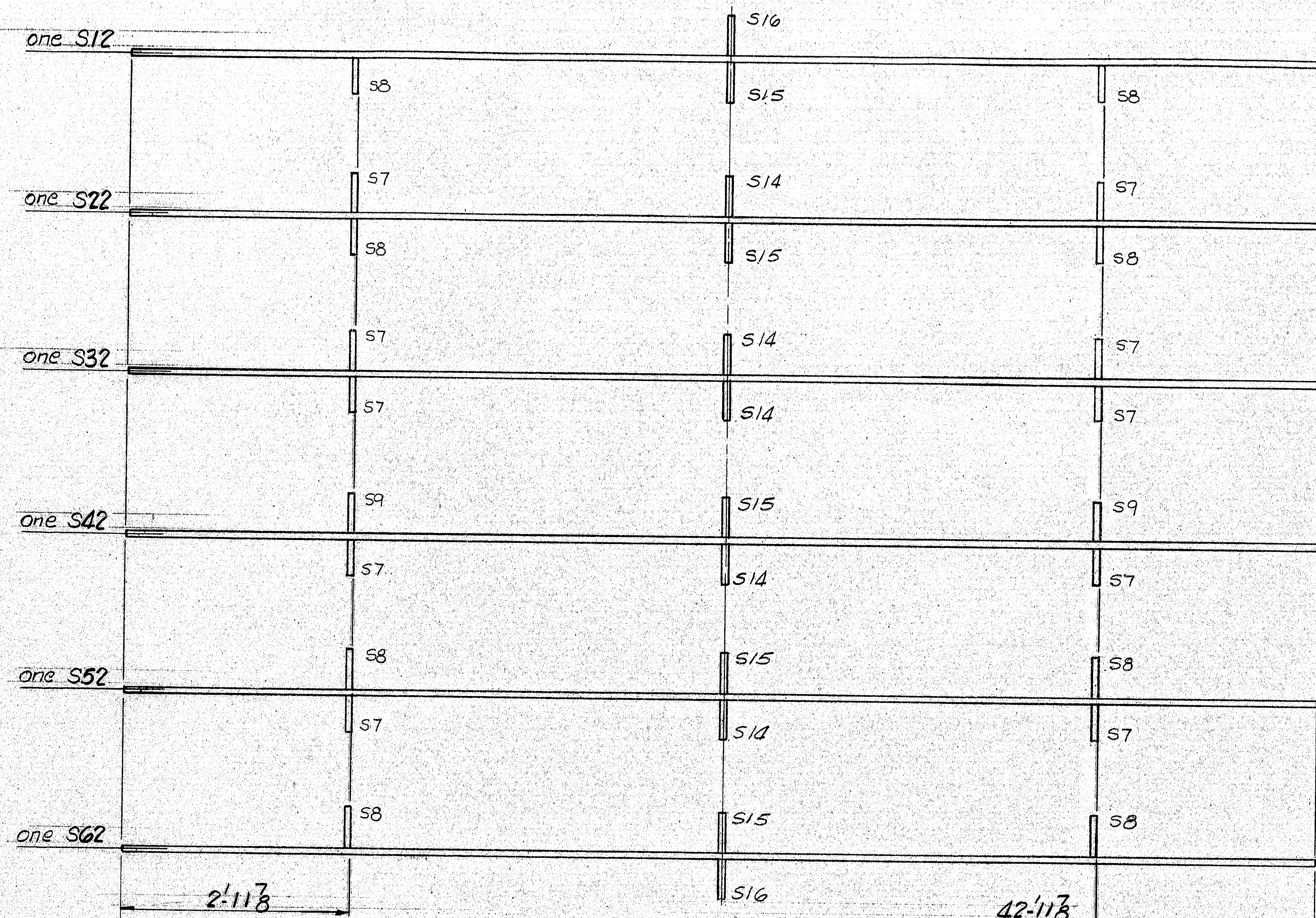
CUSTOMER: CIAMRO CORP.
DESIGNER: MAINE D.O.T. BRIDGE DIV.

DRAWN: RGM
REVISION:
REVISION:
REVISION:

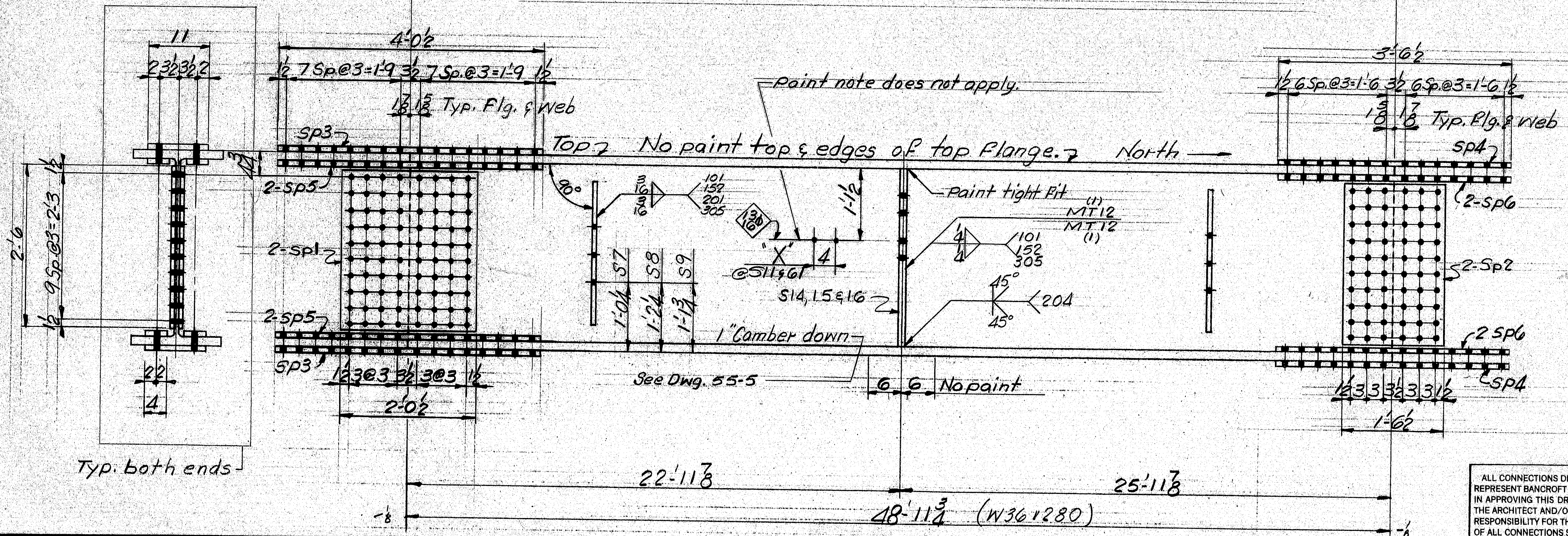
JOB NO. S78-60 DWG. NO. 51-1

160-44 #10 EPC-3

"X"
S12, S62
2'-0
7'-0
12'-0
17'-0
22'-0
27'-0
32'-0
37'-0
42'-0
47'-0

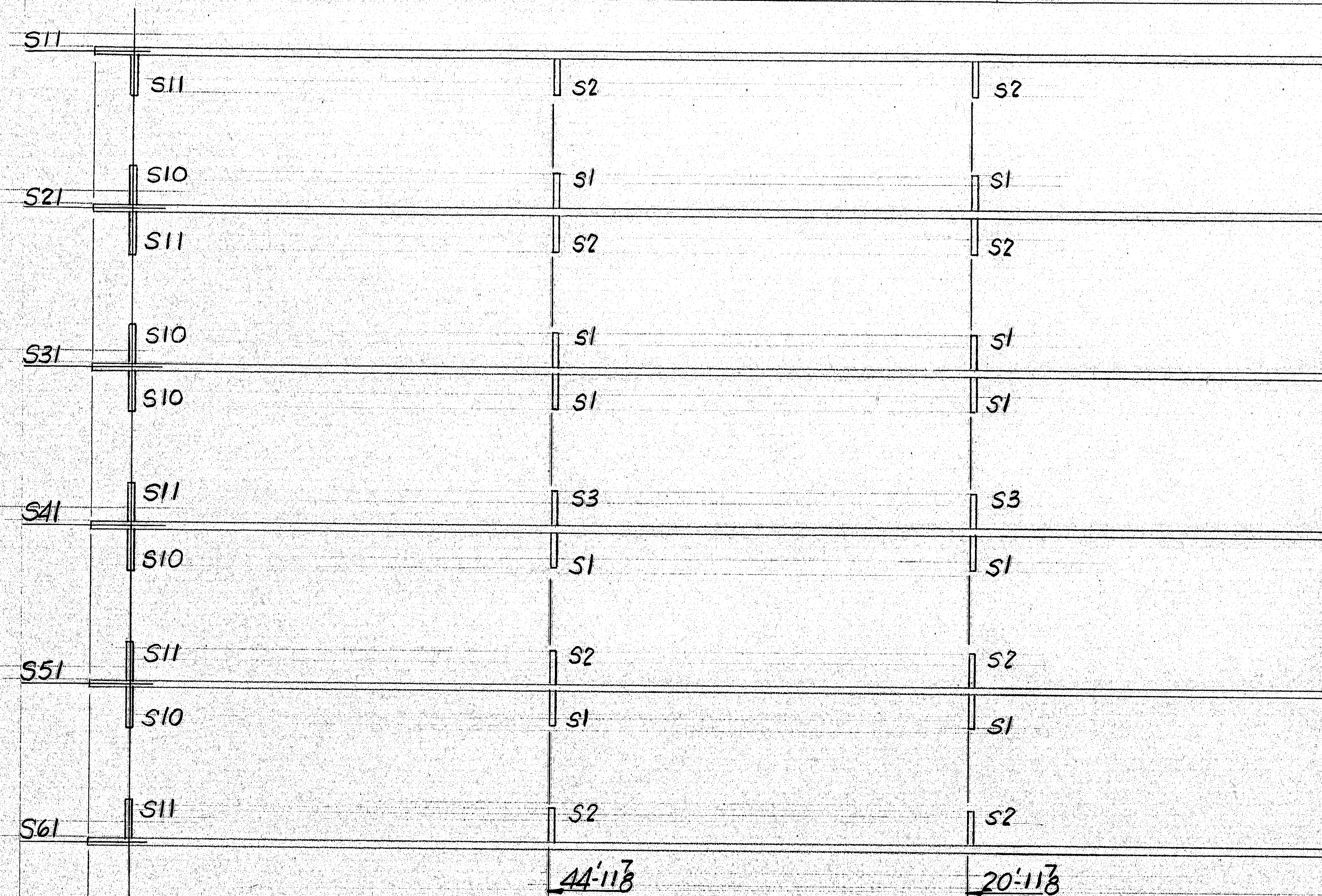


Above sections taken looking down @ web.
Diaphragm conn. plates detailed on dwg. 55-4

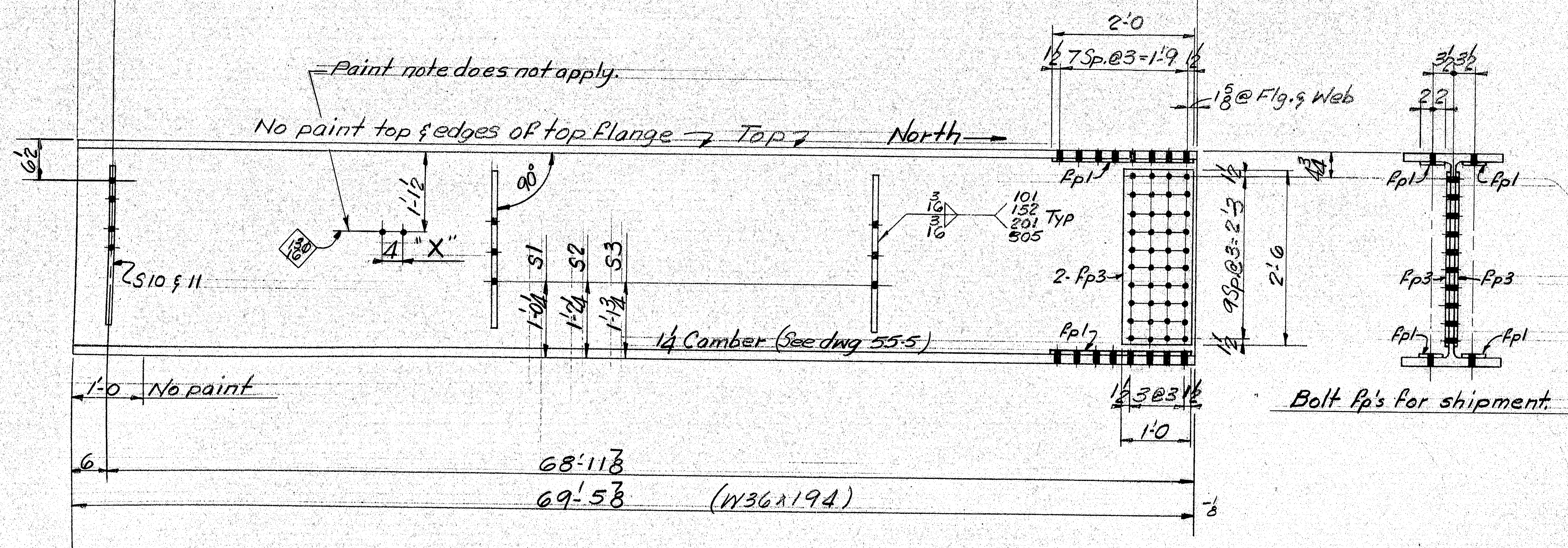


SHIP		BILL OF MATERIAL		JOB NO.		DRAWING NO.		REV.	
				578-60		55-1		△	
MARK	NO.	MARK	SHAPE	LENGTH	WT.	ITEM NO.	REMARKS		
1			W36X194	69 5/8		1B	CVN Camber 1/4"		
2			DO	69 5/8		1B			
3			W36X194	69 5/8		1B			
4			W36X280	48 11/2		1D			
5			DO	48 11/2		1D			
6			W36X280	48 11/2		1D			
7			W36X160	57 5/8		1C			
8			DO	57 5/8		1C			
9			W36X160	57 5/8		1C	Camber 1/8"		
10			24 SP5 Bar 4 x 3/4	4 0 1/2		1-F			
11			12 SP6 Bar 4 x 3/4	3 6 1/2		1-K			
12			12 SP3 R 3/8 x 11	4 0 1/2		1-E			
13			12 SP4 R 3/8 x 11	3 6 1/2		1-J			
14			12 SP1 R 3/8 x 24 1/2	2 6		1-G			
15			12 SP2 R 3/8 x 18 1/2	2 6		1-L	CVN		
16			24 Ep1 Bar 4 x 3/4	2 0		1-I	A36		
17			24 Ep2 Bar 4 x 3/4	1 9		1-N			
18			12 Ep3 R 3/8 x 12	2 6		1-H			
19			12 Ep4 R 3/8 x 9	2 6		1-O			
20			12 Ep5 R 3/8 x 11	1 9		1-M	A36		
21			10 S1 Bar 7 x 3/8	2 3		1-T	A36		
22			8 S2 DO	2 3					
23			2 S3	2 3					
24			10 S4	2 3					
25			8 S5	2 3					
26			2 S6	2 3					
27			10 S7	2 2 3/4					
28			8 S8 DO	2 2 3/4					
29			2 S9 Bar 7 x 3/8	2 2 3/4		1-T			
30			5 S10 Bar 8 x 3/8	2 3		1-S			
31			5 S11 DO	2 3		1-S			
32			5 S12 DO	2 3		1-S			
33			5 S13 Bar 8 x 3/8	2 3		1-S			
34			5 S14 Bar 8 x 3/8	2 9 3/8		1-R			
35			5 S15 DO	2 9 3/8		1-R			
36			2 S16 Bar 8 x 3/8	2 9 3/8		1-R	A36		
							HOLES ARE FOR HIGH TENSILE BOLTS THEY ARE TO BE FREE FROM BURRS AND SHALL NOT BE PAINTED ON ANY SURFACE WITHIN 5" OF SUCH OPEN HOLES - U.N.		
Above B.O.M. covers dwg. 55-2, 55-4 also									
IT. NO. 504.70		BR. NO.		PROJ. NO. 16-95-9 (82)					
FOR APPROVAL <input checked="" type="checkbox"/> FOR FILES & FIELD <input checked="" type="checkbox"/>									
STEEL: ASTM. <input type="checkbox"/> A36 <input checked="" type="checkbox"/> A572 GR. 50 <input type="checkbox"/> A588 GR. 1 <input checked="" type="checkbox"/> Unless Noted									
WELDING ELECTRODE: <input type="checkbox"/> E70 <input checked="" type="checkbox"/> See Welding Proc. <input type="checkbox"/> None									
SHOP CONN: <input checked="" type="checkbox"/> Bolted <input checked="" type="checkbox"/> Welded <input type="checkbox"/> None									
FIELD CONN: <input checked="" type="checkbox"/> Bolted <input checked="" type="checkbox"/> Welded <input type="checkbox"/> None									
HOLES: <input type="checkbox"/> 13/16 <input checked="" type="checkbox"/> 15/16 <input type="checkbox"/> Unless Noted <input type="checkbox"/> None									
PAINT: <input type="checkbox"/> None <input type="checkbox"/> Shopcoat <input type="checkbox"/> Galv. After Fab. <input checked="" type="checkbox"/> As Noted									
SPECIAL PAINT: Basic Lead Silico Chromate Orange as noted									
SPECIAL CLEANING: <input checked="" type="checkbox"/> Blast Clean <input type="checkbox"/> None <input type="checkbox"/> SSPC-SP. 6									
STRINGERS									
APPROVED: 1-2-79									
PRINT DIST. <input checked="" type="checkbox"/> 2P 1/4-78 APP. <input checked="" type="checkbox"/> 3 1-2-79 FAB. <input checked="" type="checkbox"/> 3 1-10-79 F&F. <input checked="" type="checkbox"/> 2 copies 12-19-78 F&F.									
Bancroft & Martin Inc. South Portland, Maine 04106 JOB: I-95 NB OVER OLD RTE 159 @ B.I.A.R. ISLAND FALLS, ME. CUSTOMER: CIANBRO CORP. DESIGNER: MAINE D.O.T. BRIDGE DIV. ORDER NO. <input type="checkbox"/> JOB NO. <input type="checkbox"/> DRAWING NO. <input type="checkbox"/> REV. <input type="checkbox"/>									
REV. △		CHECKED		DRAWN		RGM		578-60 55-1 △	

160-46



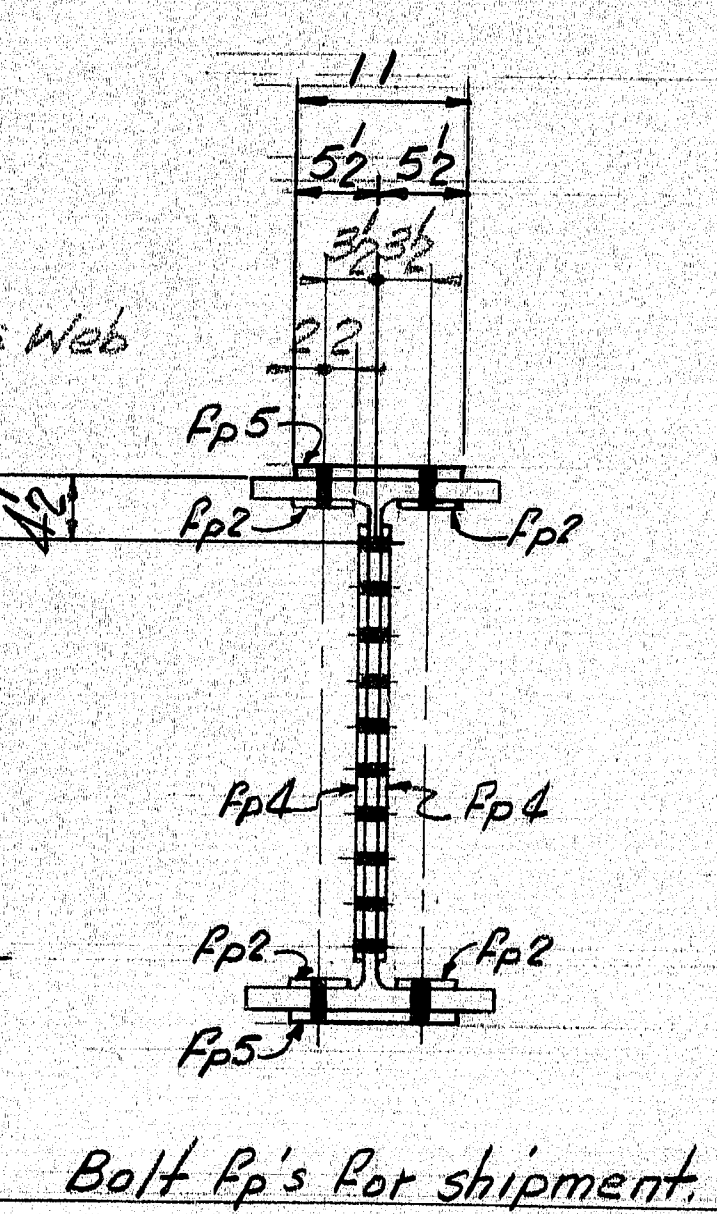
Above sections taken looking down @ web
Diaphragm conn. R's detailed on dwg. 55-4



NOTE: B.O.M. & General notes on dwg. 55-1
Camber diagram on dwg. 55-5
Diaphragm conn. R's on dwg. 55-4
Holes are 1/8\"/>

APPROVED 1-2-79		PROJ. No. IG-95-9 (82)		
STRINGERS				
PRINT DIST.		Bancroft & Martin Inc. South Portland, Maine 04106 JOB: I-95 NB OVER OLD RTE. 159 & B.F.A.R.R. ISLAND FALLS, ME. CUSTOMER: CHAMBERLAIN CORP DESIGNER: MAINE D.O.T. BRIDGE DIV.		
2P 11-14-78 A				
2 Sp. 12-19-78 E.A.				
3 1-2-79 SHOP				
3 1-10-79 P.F.				
REV.		ORDER NO.	JOB NO.	DRAWING NO.
CHECKED				
DRAWN	EGM		578-60	55-2

160-47



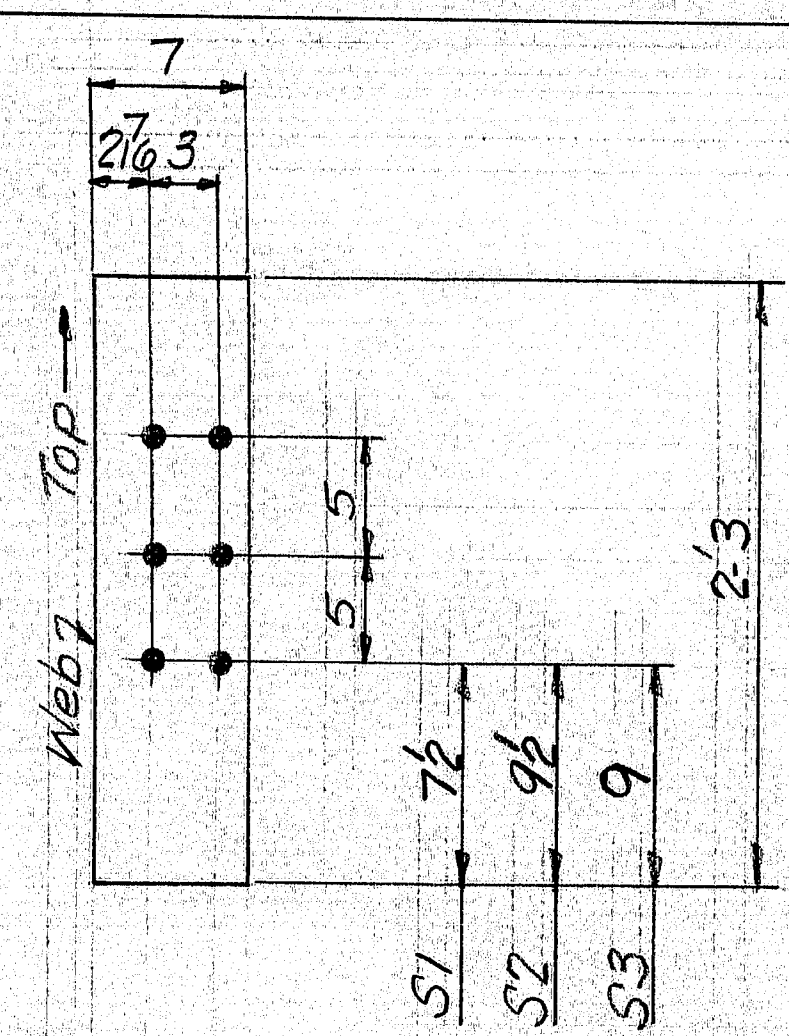
HOLES ARE FOR HIGH TENSILE BOLTS
THEY ARE TO BE FREE FROM BURRS
AND SHALL NOT BE PAINTED ON ANY
SURFACE WITHIN 5" OF SUCH OPEN
HOLES. U. N.

NOTE: B.O.M. & General notes on dwg. 55-1
Camber diagram on dwg. 55-5
Diaphragm conn. R's on dwg 55-4
Holes are $\frac{1}{8}\phi$ U.N.

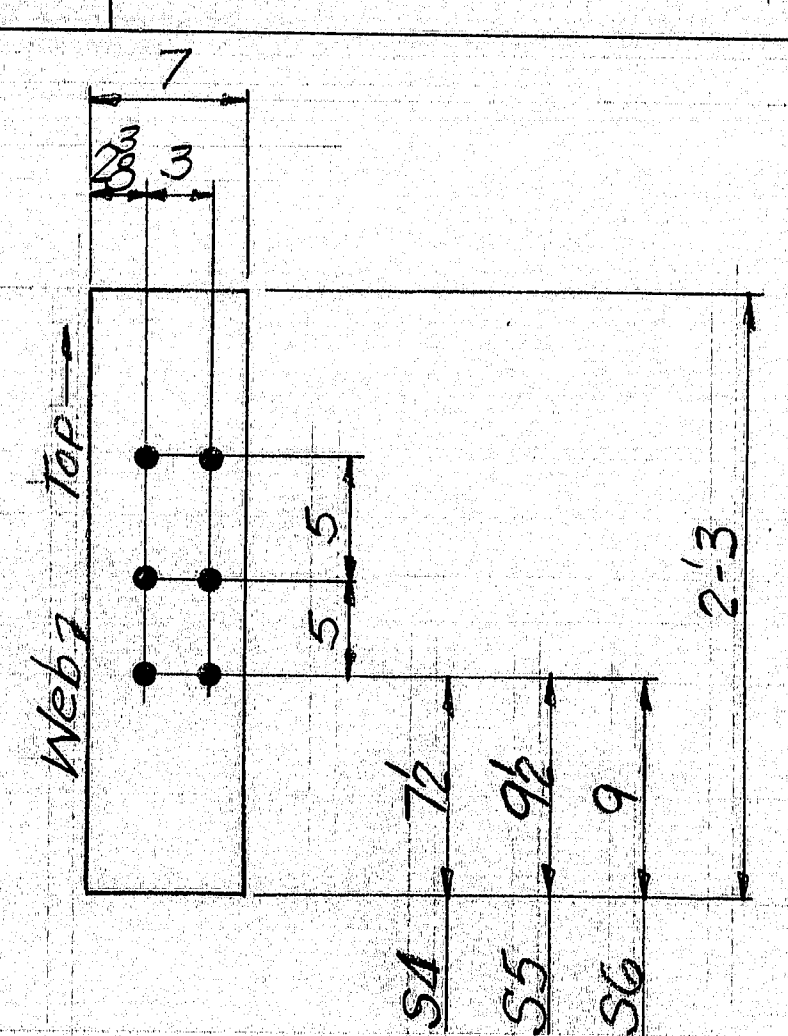
APPROVED 1-2-79 PROJ. No. IG-95-9 (82)

STRINGERS		
PRINT DIST.		
2P	1/14-78	A
2 copies	12/14-78	F.A.
3	1-2-79	540P
3	1/10-79	F&F
Bancroft & Martin Inc. South Portland, Maine 04106 JOB: I-95 NB OVER OLD RTE. 15 & B&ARR. ISLAND FALLS, ME.		
CUSTOMER: CIANBEO CORP		
DESIGNER: MAINE D.O.T. BRIDGE DIV		
REV.	ORDER NO.	JOB NO.
CHECKED		
DRAWN	RGM	578-60
		55-3

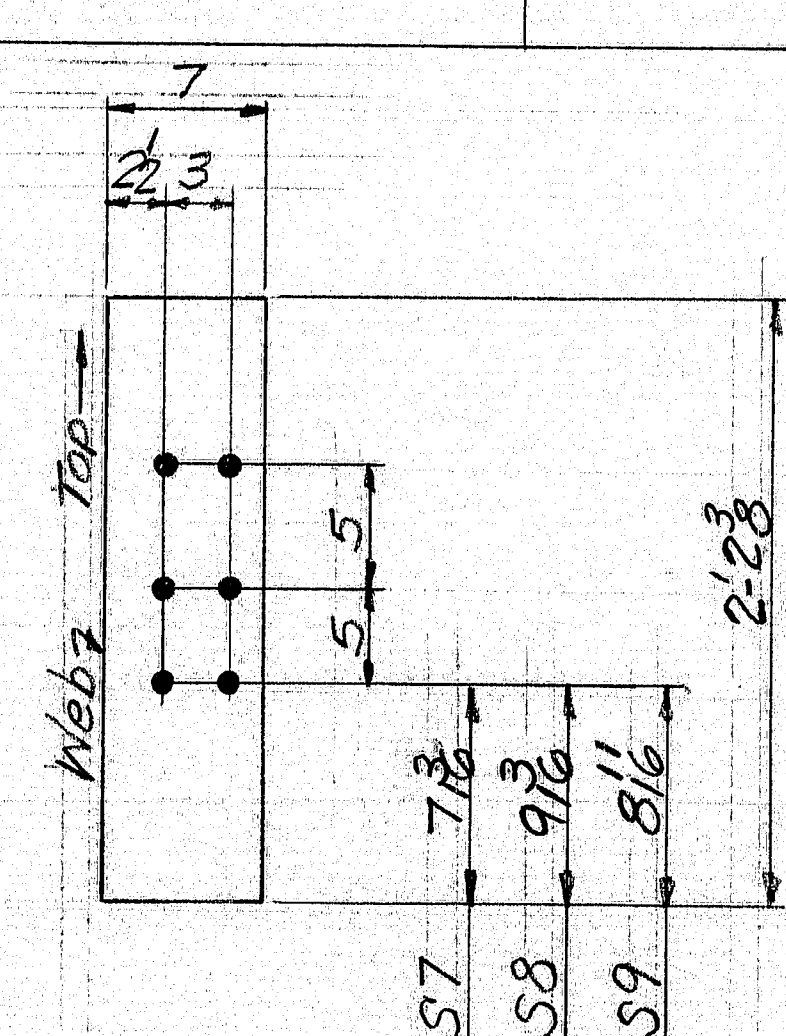
160-48



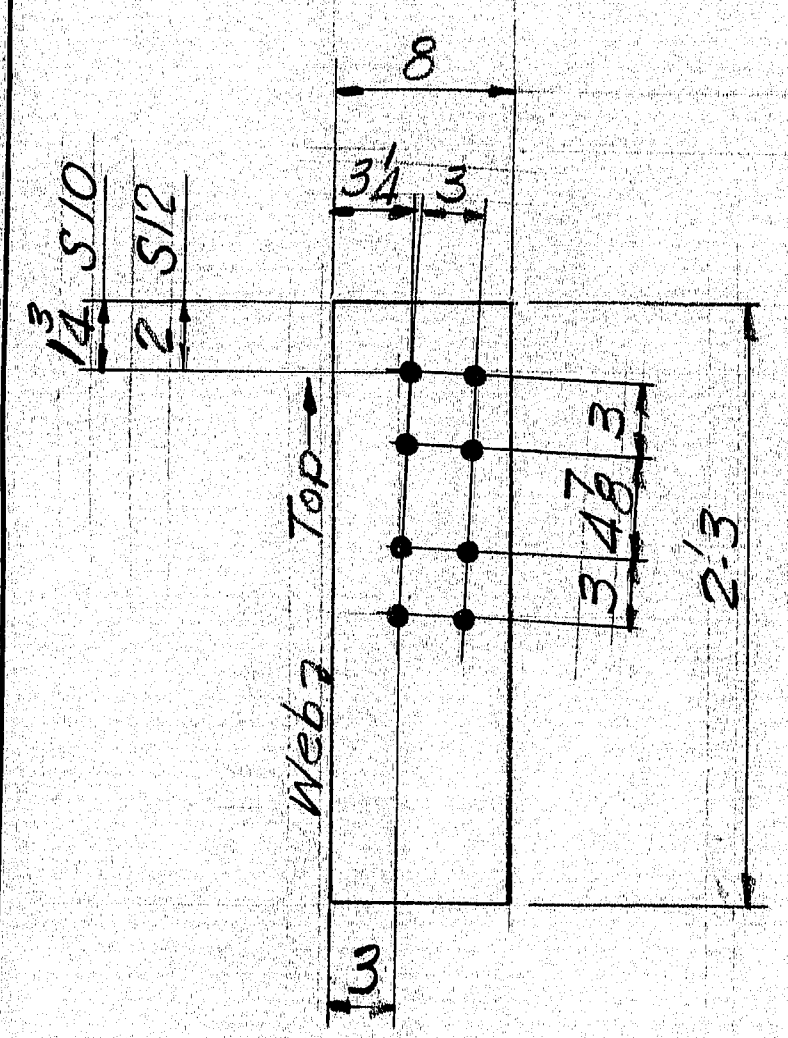
S1	10	REQ'D.
S2	8	DO
S3	2	DO



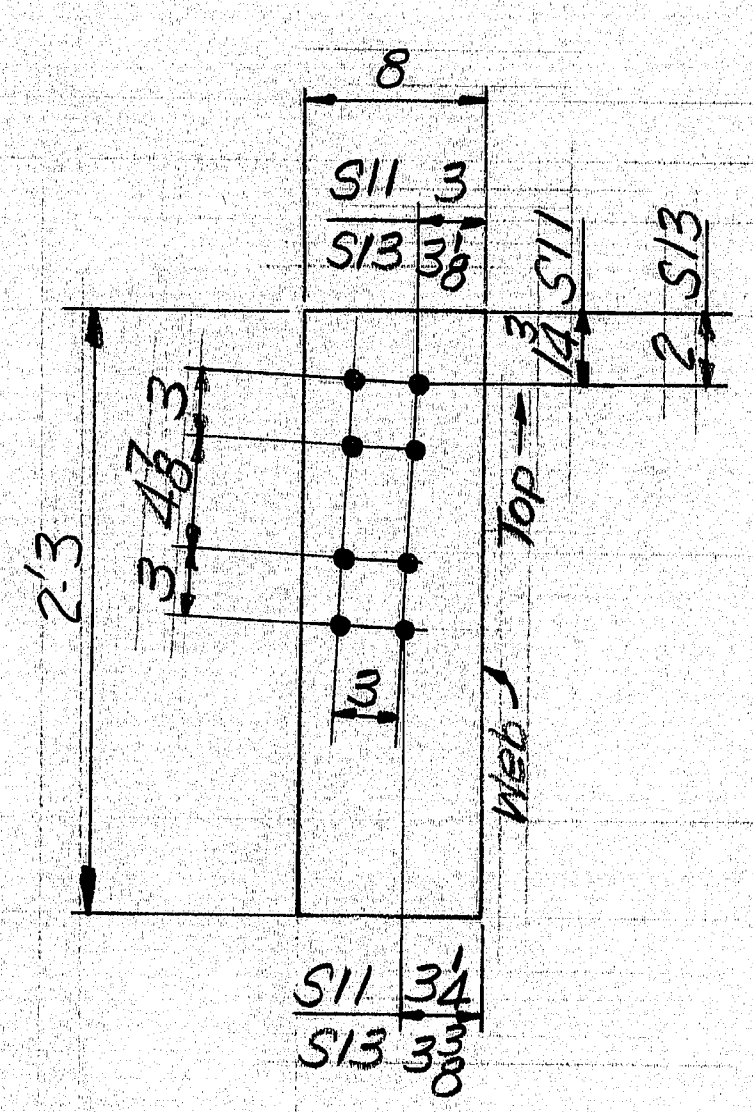
S4	10	REQ'D.
S5	8	DO
S6	2	DO



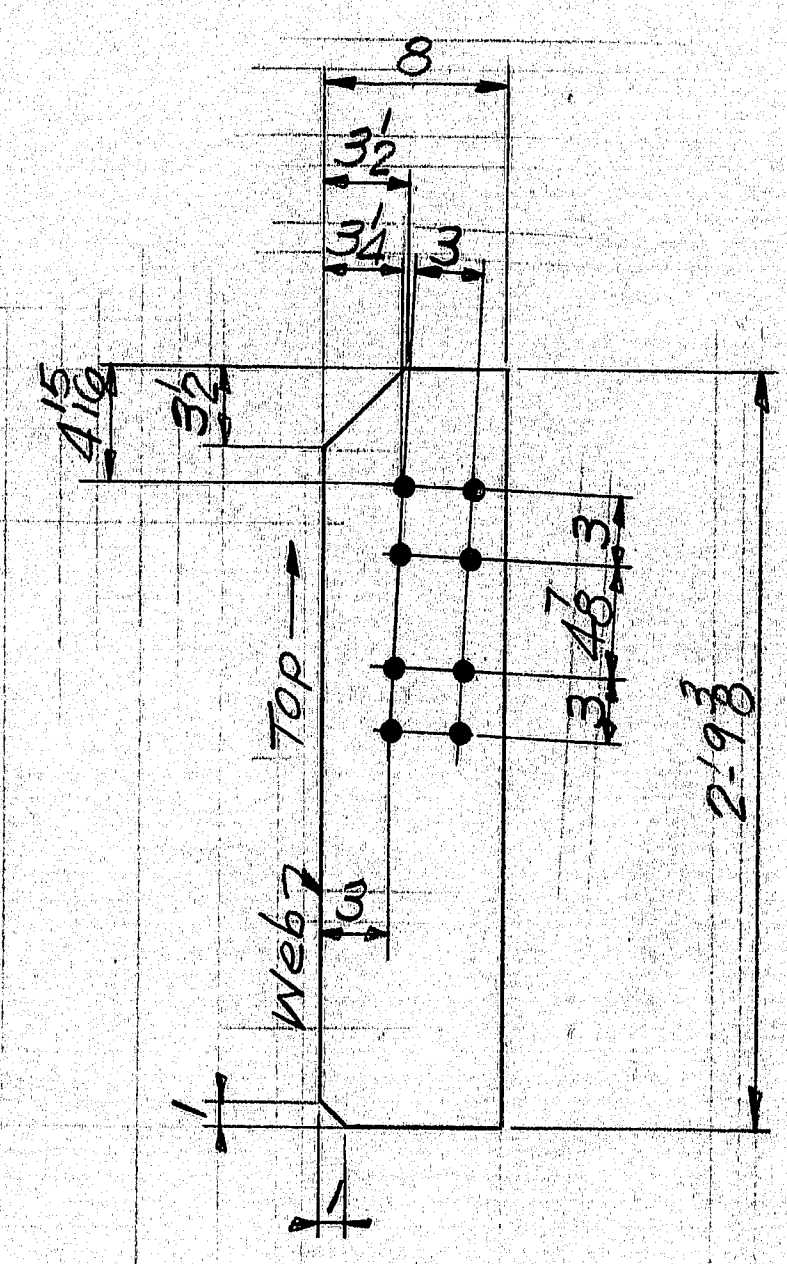
S7	10	REQ'D.
S8	8	DO
S9	2	DO



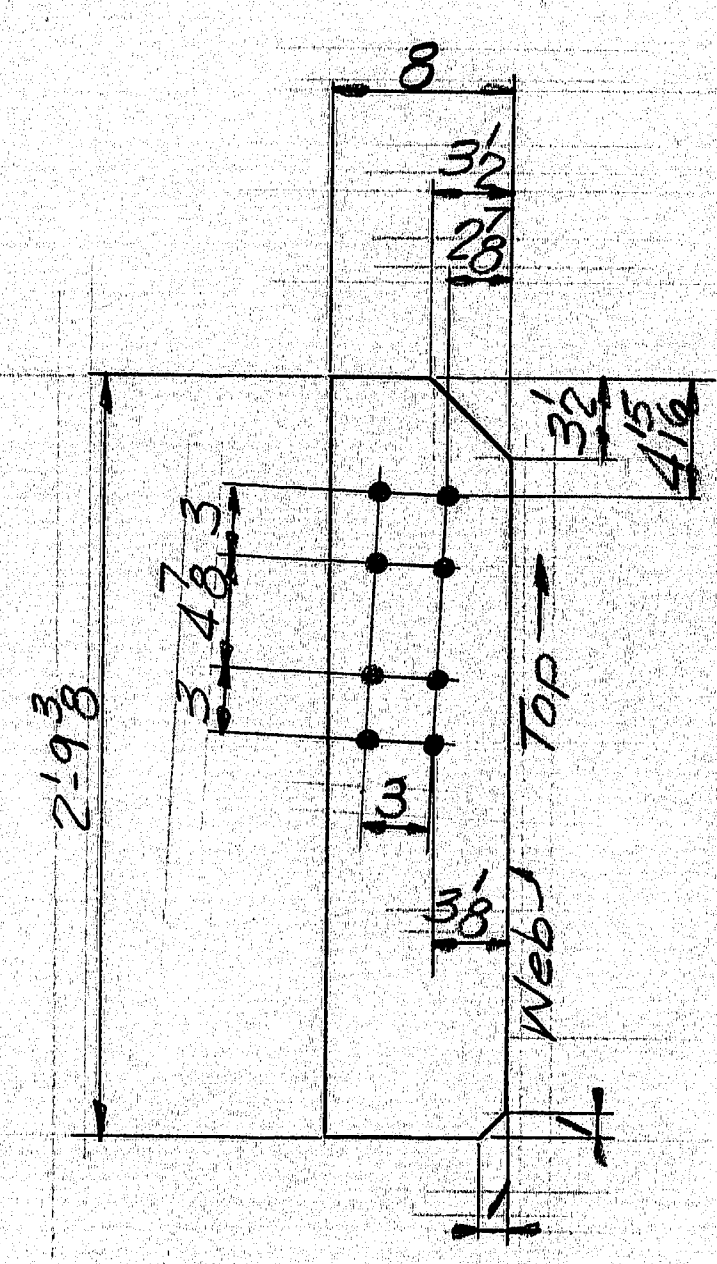
S10	5	REQ'D.
S12	5	DO



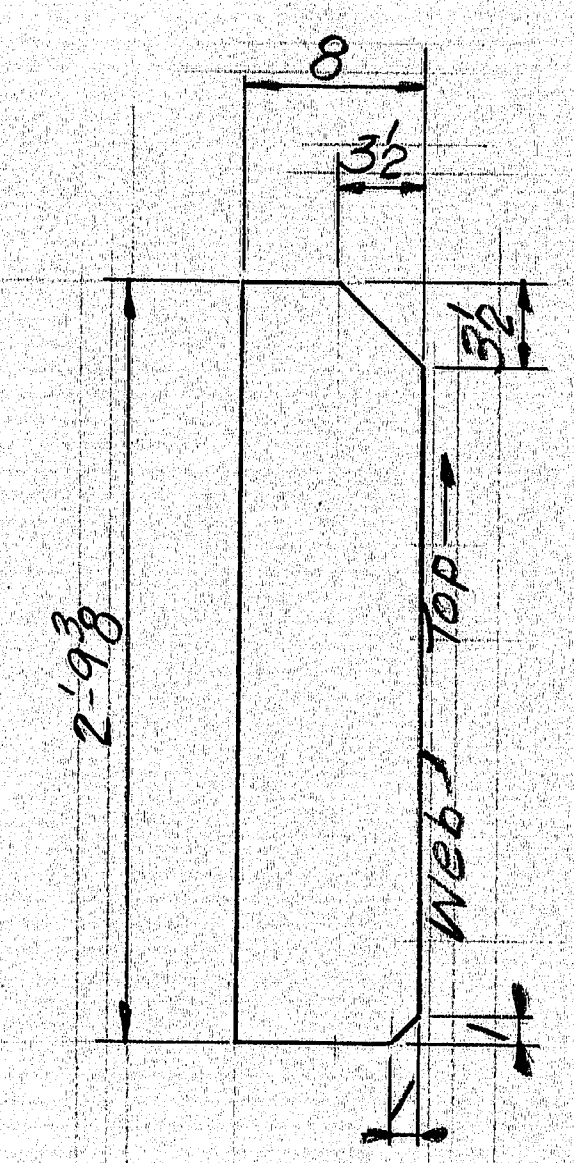
S11	5	REQ'D.
S13	5	DO



S14	5	REQ'D.
-----	---	--------



S15	5	REQ'D.
-----	---	--------



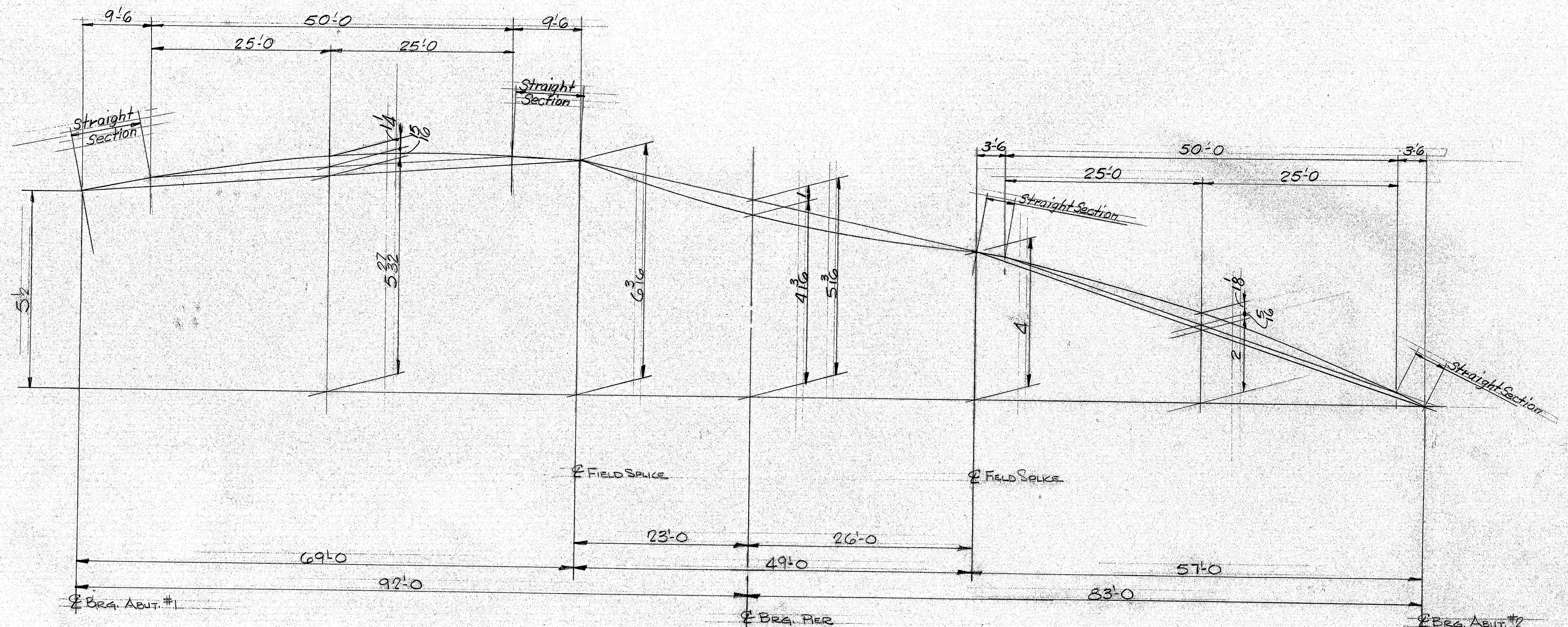
S16	2	REQ'D.
-----	---	--------

B.O.M. on dwg. 55-1
Holes 1 1/2" Ø

HOLES ARE FOR HIGH TENSILE BOLTS
THEY ARE TO BE FREE FROM BURRS
AND SHALL NOT BE PAINTED ON ANY
SURFACE WITHIN 5" OF SUCH OPEN
HOLES

APPROVED: 1-2-79		PROJ. No. IG-95-9 (82)	
DIAPHRAGM CONN. 12'S			
PRINT DIST.		Bancroft & Martin Inc.	
2P 1/14-78 A		South Portland, Maine 04106	
2 Supers 12-14-78 F.A.		JOB: I-95 NB OVER OLD RTE. 159	
3 1-2-79 5 No 12		B & A.R.R.	
3 1-10-79 FSE		ISLAND FALLS, ME.	
		CUSTOMER: CIAMBRO CORP.	
		DESIGNER: MAINE D.O.T. BRIDGE DIV.	
REV.		ORDER NO.	JOB NO.
CHECKED			
DRAWN	PGM	578-60	55-4

160-49

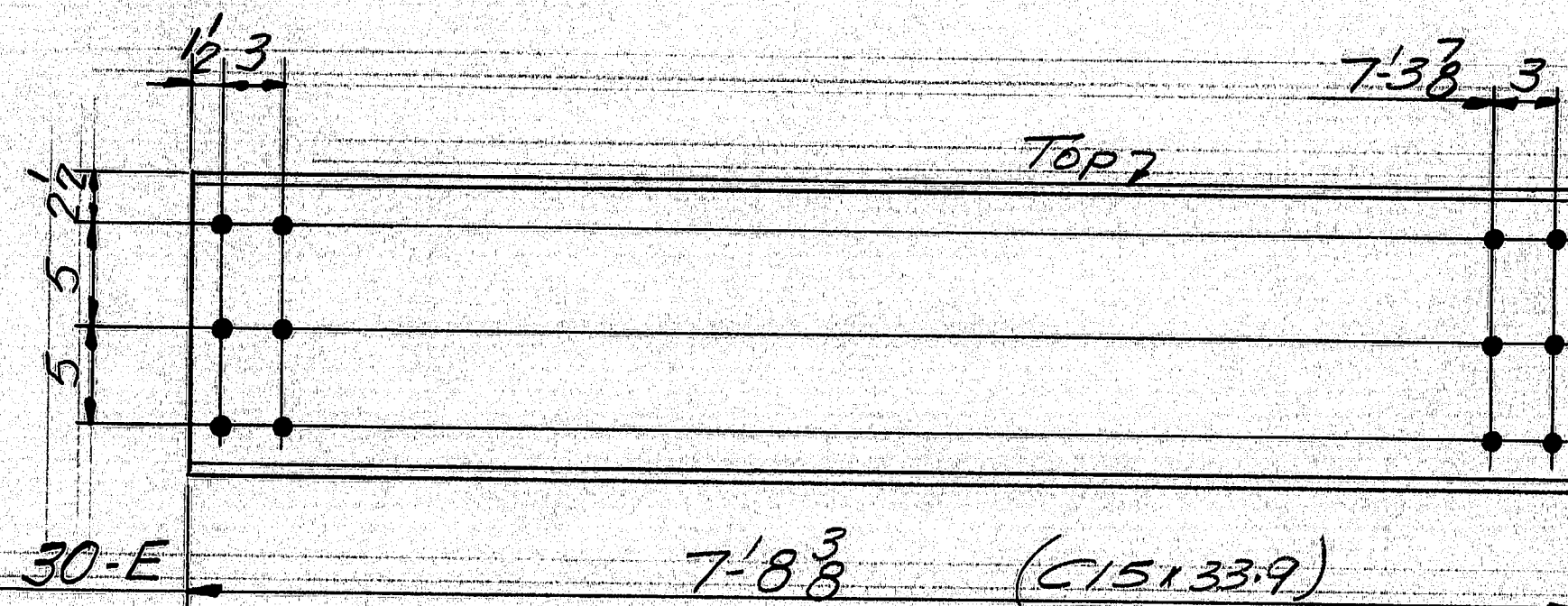
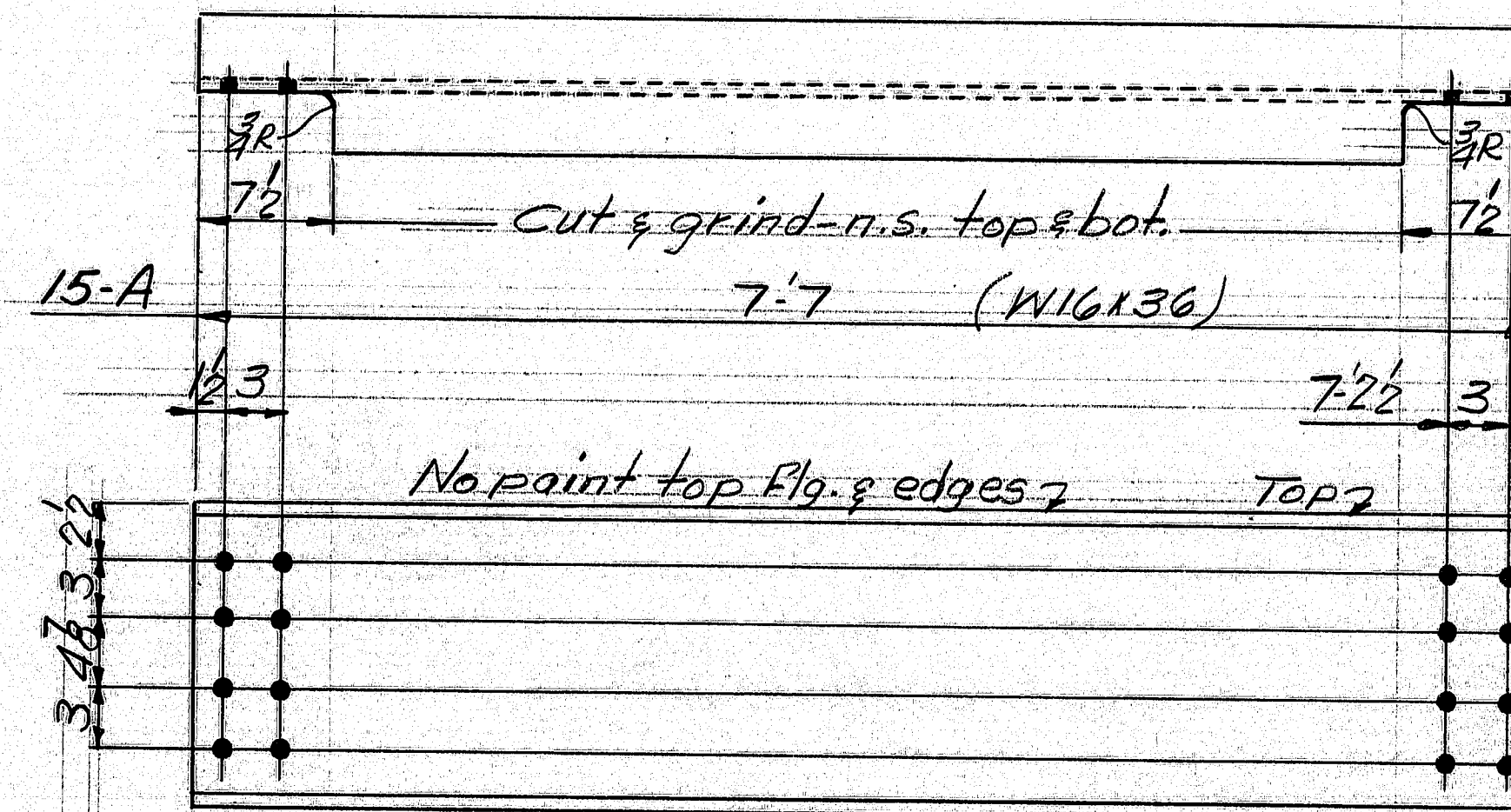


CAMBER DIAGRAM

APPROVED: 1-2-79 PROJ. NO. 16-95-9 (82)

CAMBER DIAGRAM		Baneroff & Martin Inc.	
PRINT DIST.	2P 114-78 A	South Portland, Maine 04106	
DESIGNED	12-19-78 FA	JOB: I-95 OVER RTE. 159 & B&A	
CHECKED	1-2-79 SHP	RAILROAD, ISLAND FALLS, ME.	
DRAWN	1-10-79 FJE	CUSTOMER: CIMBRO CORP.	
REV.		DESIGNER: STATE OF MAINE DEPT. OF TRANS.	
CHECKED		ORDER NO.	JOB NO.
DRAWN	9/26/83 BB	578-60	55-5

160-50



SHIP		BILL OF MATERIAL				JOB NO.	DRAWING NO.	REV.
						578-60	56-1	△
MARK	NO.	MARK	SHAPE	LENGTH	WT.	ITEM NO.	REMARKS	

A	15		W16x36	7'7"		14		
E	30		C15x33.9	7'8 3/8"		14		

HOLES ARE FOR HIGH TENSILE BOLTS
THEY ARE TO BE FREE FROM BURRS
AND SHALL NOT BE PAINTED ON ANY
SURFACE WITHIN 5" OF SUCH OPEN
HOLES

IT. NO. 504.70	BR. NO.	PROJ. NO. 16-95-9 (82)
----------------	---------	------------------------

FOR APPROVAL ☒ **FOR FILES & FIELD**

STEEL: ASTM. ☒ A36 ☐ A572 GR. ☐ A588 GR. ☐ Unless Noted

WELDING ELECTRODE: ☐ E70 ☐ See Welding Proc. ☒ None

SHOP CONN: ☐ Bolted ☐ Welded ☒ None

FIELD CONN: ☒ Bolted ☐ Welded ☐ None

HOLES: ☐ 13/16 ☒ 15/16 ☐ Unless Noted ☐ None

PAINT: ☐ None ☒ Shopcoat ☐ Galv. After Fab. ☐ As Noted

SPECIAL PAINT: Basic Lead Silico Chromate Orange as noted

SPECIAL CLEANING: ☒ Blast Clean ☐ None ☐ SSPC-SP.6

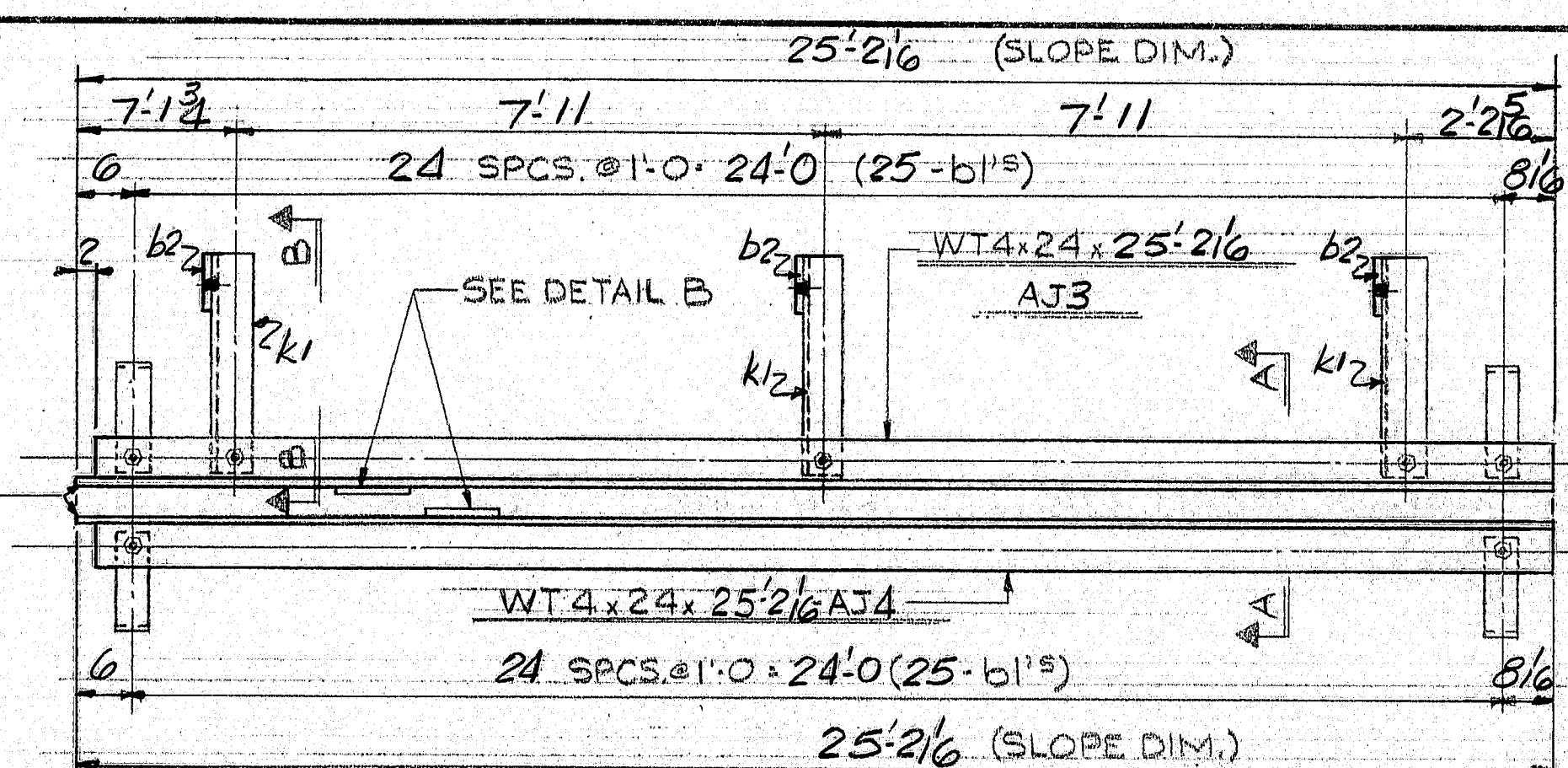
DIAPHRAGMS
Final Rev. 1-2-78
APPROVED: 12-13-78

PRINT DIST.	2P 11-14-78 APP.	3P 1-2-79 FAB.	3P 1-10-79 F&E	3P 12-19-78 FA.
-------------	------------------	----------------	----------------	-----------------

Bancroft & Martin Inc.
South Portland, Maine 04106
JOB: I-95 NB OVER RTE 159
2 BARR.
ISLAND FALLS, ME.
CUSTOMER: CIABRO CORP.
DESIGNER: MAINE D.O.T. BRIDGE DIV.

REV. △	ORDER NO.	JOB NO.	DRAWING NO.	REV.
CHECKED			578-60	56-1
DRAWN				△

ALL CONNECTIONS DETAILED ON THIS DRAWING
REPRESENT BANCROFT & MARTIN INC. STANDARDS.
IN APPROVING THIS DRAWING, FOR FABRICATION,
THE ARCHITECT AND/OR ENGINEER ASSUMES THE
RESPONSIBILITY FOR THE STRUCTURAL INTEGRITY
OF ALL CONNECTIONS SHOWN.



Technical drawing of a reinforced concrete beam section showing reinforcement details. The drawing includes a top view and a side view.

Top View:

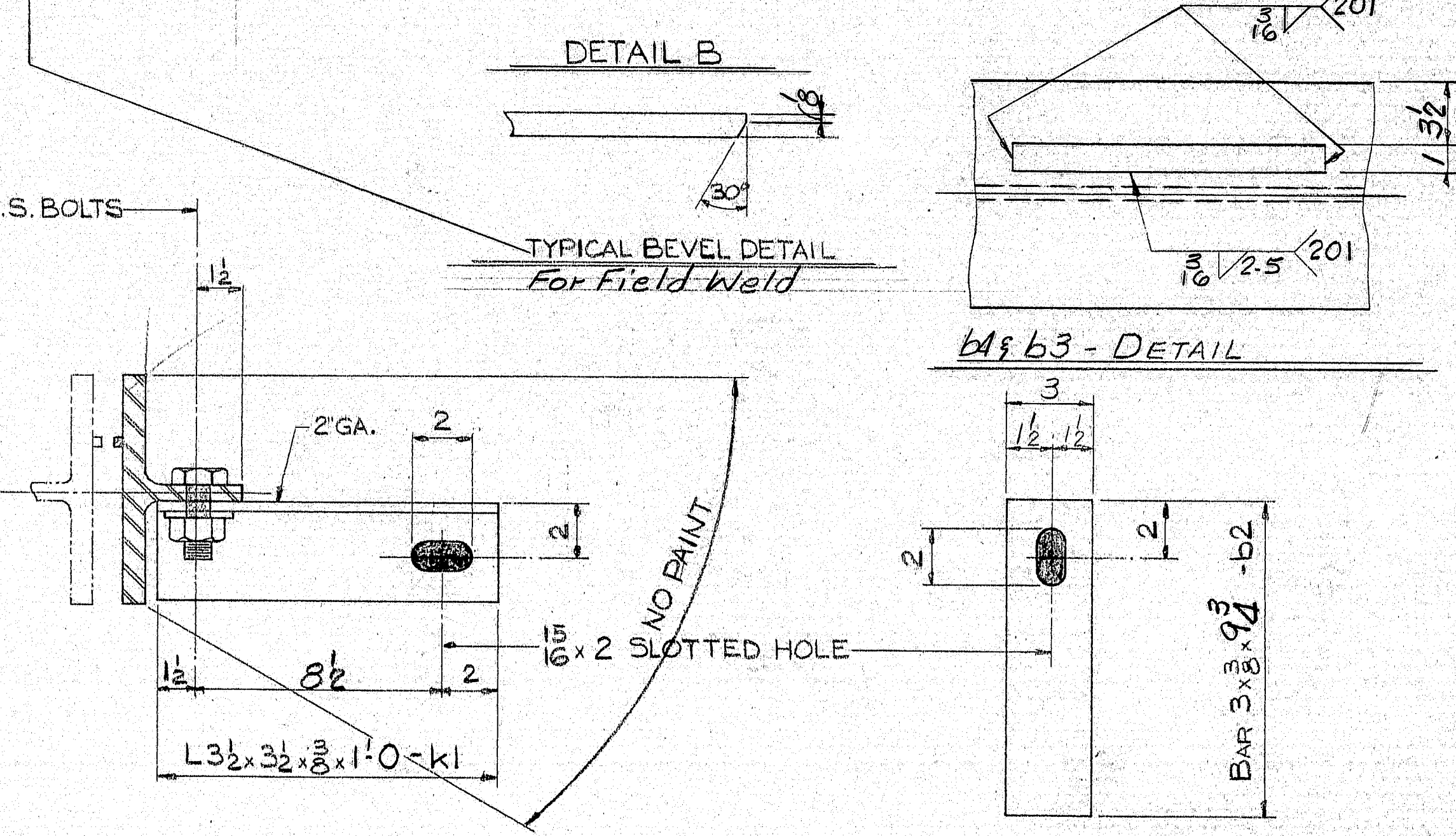
- Beam width: 14'0"
- Beam length: 22'6"
- Reinforcement: 9 SPCS. @ 2'-6" = 22'6" (10 - b3's)
- Note: b3 - TYR EXCEPT AS NOTED
- Signature: AJ3

Side View:

- Beam height: 2'-0"
- Beam length: 22'6"
- Reinforcement: 9 SPCS. @ 2'-6" = 22'6" (10 - b3's)
- Signature: AJ4

Joint Detail:

- Label: ARMORED JOINT-ONE REQ'D.



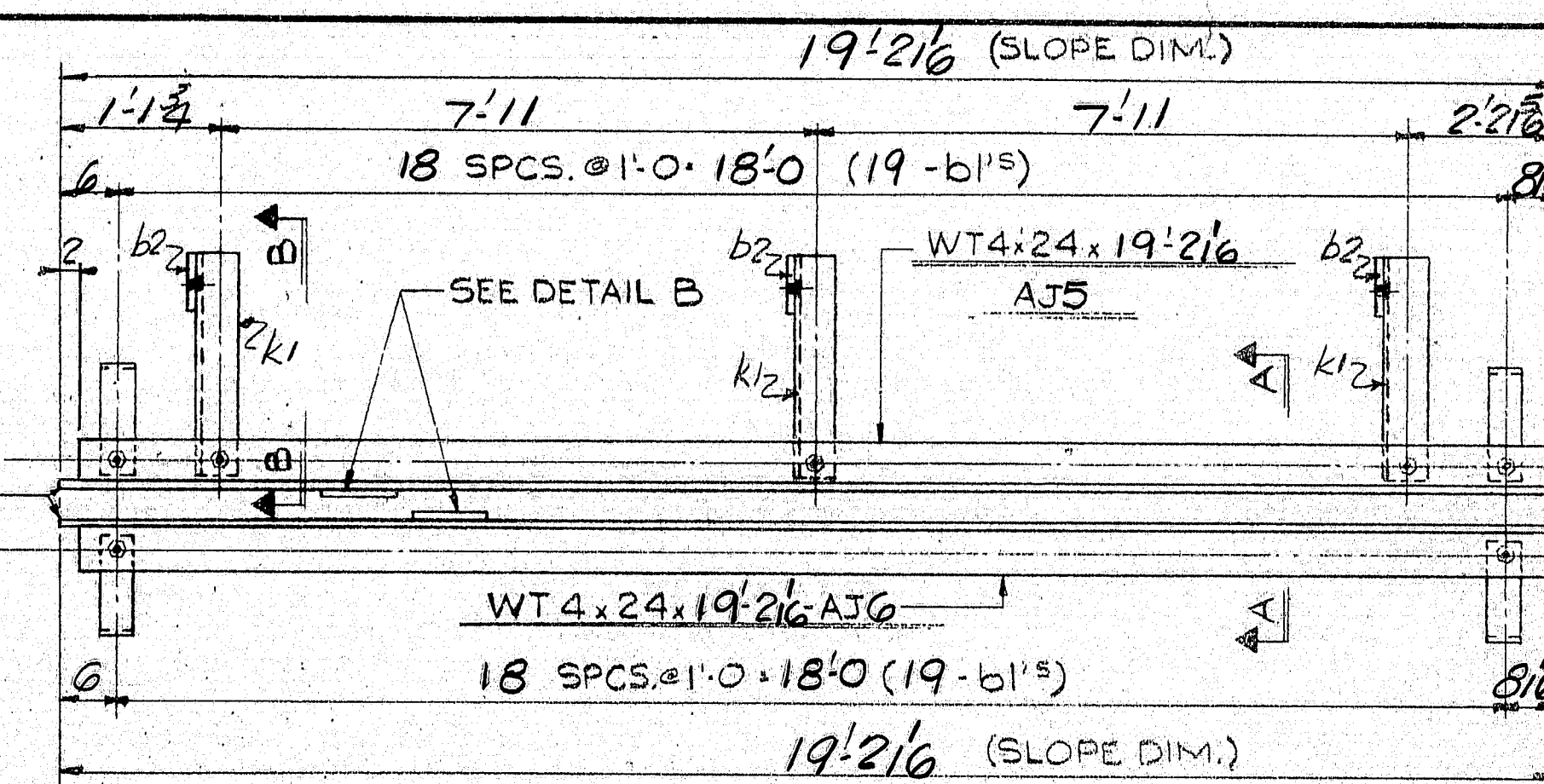
b2 - DETAIL (NO PAINT)
BOLT TO K1 FOR SHIPMENT
USE 3" ϕ x 24" H.S. BOLTS

98 Shop	30 H.S. Bolts	0 2 1/4	3K	4-325.T1
98 Shop	30 Hard Washers		3P	DO

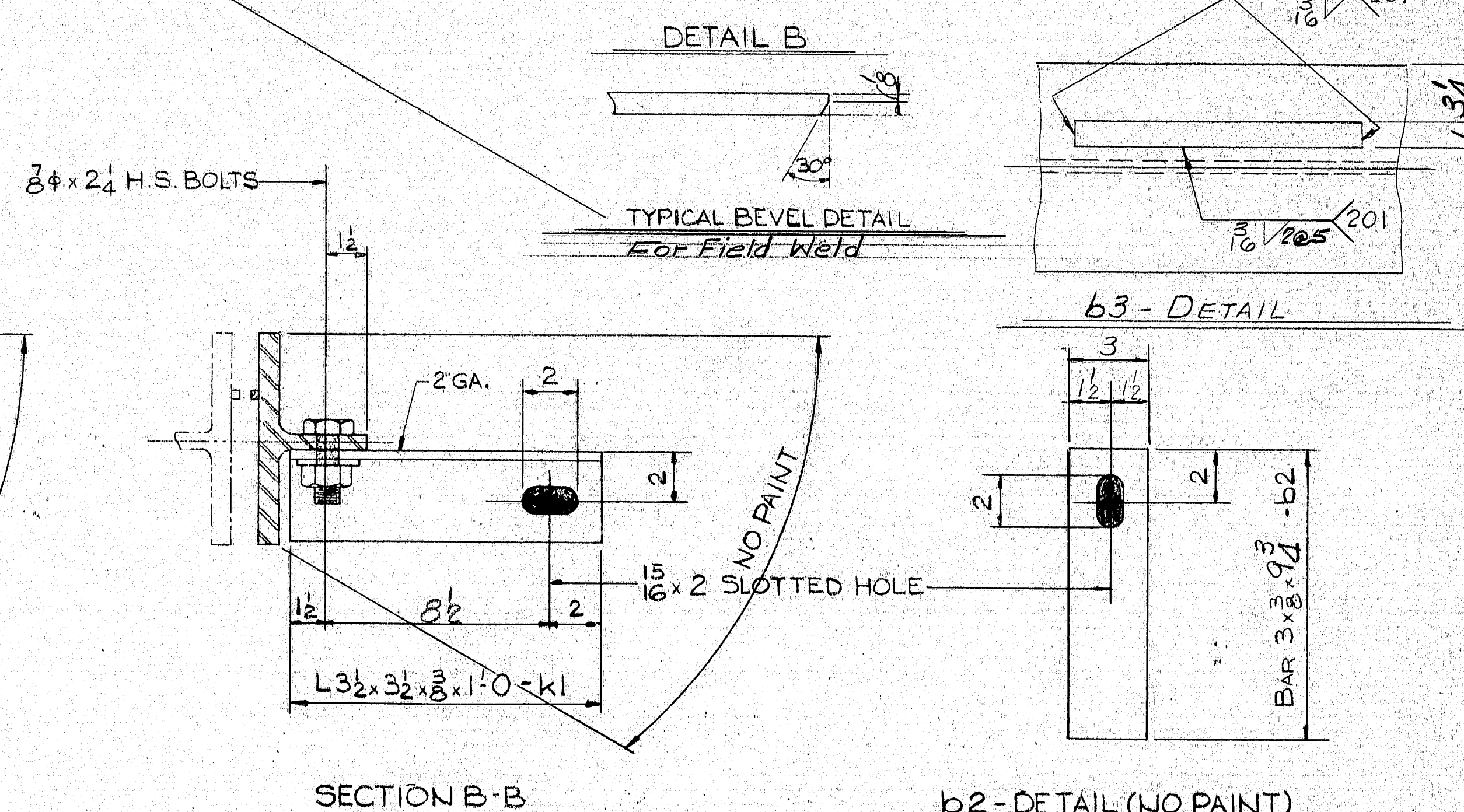
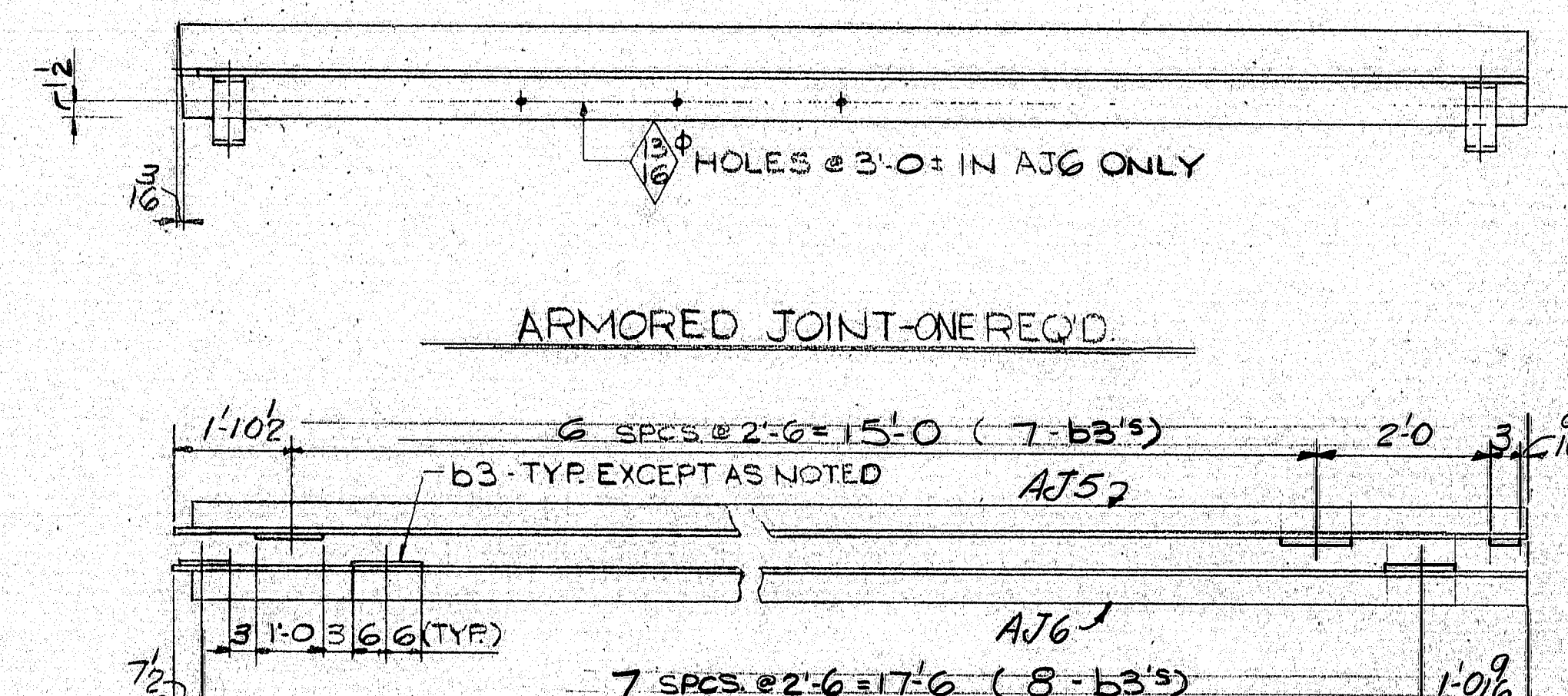
[illegible]

ARMORED JOINTS - ABUT. #1		
PRINT DIST.	Bancroft & Martin Inc.	
2D 1-14-79 A	South Portland, Maine 04106	
2 Series 12-14-78 EA	JOB. I-95 NB OVER OLD RTE 159	
3 1-2-79 Shop	4 B. & A.R.R.	
4 1-10-79 F&E	ISLAND FALLS, ME.	
	CUSTOMER: CIANBRO CORP.	
	DESIGNER: ME. D.O.T. - BRIDGE DIV.	
REV.	ORDER NO.	JOB NO.
CHECKED		DRAWING NO.
DRAWN	RGM	578-60 58-1

160-52



Note: When anchor bar b1 interferes with adjustment angle k_1 , bar b1 may be eliminated.



SHIP		BILL OF MATERIAL			JOB NO. 578-60		DWG. NO. 58-2	
MARK	NO.	MARK	SHAPE	LENGTH	WT.	ITEM NO.	REMARKS	
AJ5	1		W4 x 24	19 2 1/2		3-B		
AJ6	1		DO	19 2 1/2		3-B		
AJ7	1		DO	25 2 1/2		3-C		
AJ8	1		DO	25 2 1/2		3-C		

1	b4	Bar 1 x $\frac{3}{8}$	0	3	3G
35	b3	Bar 1 x $\frac{3}{8}$	1	0	3-G
86	b1	Bar 2 $2 \times \frac{3}{8}$	1	3	3F
6	b2	Bar 3 x $\frac{3}{8}$	0	9 $\frac{3}{4}$	3-E
6	K1	L3 $2 \times 3 \frac{1}{2} \times \frac{3}{8}$	1	0	3-L

98	Shop	304 S. Bolts	0 2 1/4	3K	A-325.T1
98	Shop	30 Hard Washers		3P	00

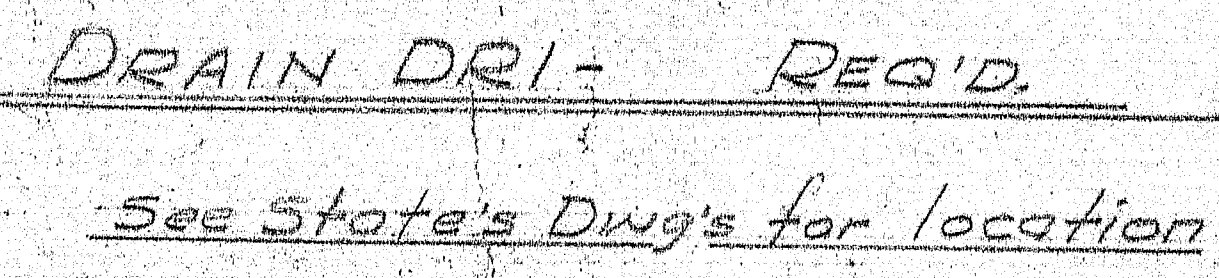
Seal by Cianbro

[illegible]

STEEL: ASTM. *A36*
WELDING ELECTRODE *See Welding procedures.*
SHOP CONN: *WELDED*
FIELD CONN: *WELDED*
HOLES: *5/8" EXCEPT AS NOTED*
PAINT: *Basic Lead Silico Chromate Orange as noted.*
SPECIAL CLEANING: *BLAST CLEAN SSPC-SP6*
APPROVED: *1-2-79*

ARMORED JOINTS - ABUT. #2					
PRINT DIST.		<i>Bancroft & Martin Inc.</i> <i>South Portland, Maine 04106</i> JOB: <i>I-95 NB OVER OLD RTE 159</i> <i>& B. & A.R.R.</i> <i>ISLAND FALLS, ME.</i> CUSTOMER: <i>CIANBRO CORP.</i> DESIGNER: <i>ME. D.O.T. - BRIDGE DIV.</i>			
2D	11-14-78				EA
23	12-27-78				FA
3	1-2-79				SMOP
3	10-79				FFE

160-53



160-54

FIELD BOLTS		JOB: S78-60	
		DWG: 62-1	
SPECIFICATION: 3/8 H.S. Bolts A325-T1			
CONNECTING	LENGTHS		
Diaph. A @ Abut 152	2	24	3 1/2
" " Pier 1	160	80	44
" E Int.		360	
Splice 152			
Top & Bot Flg.			
2 Web			
B26586			
Elevating Brkt.			
Bolts 3/8 x 12 Long Carriage Bolts			
ITEM 504.70			
PROJ. NO. I-16-95-9 (82)			
LENGTHS	2	24	3 1/2
SUB TOTAL	160	449	857
+2%			735
TOTAL:			150
RAIN (Hard) Cupped Reveled			
WASHERS	2205		
TOTAL WEIGHT			
FIELD BOLTS			
PRINT DIST.	Bancroft & Martin Inc.		
3 1-2-79 SHP	South Portland, Maine 04106		
3 1-10-79 FIF	JOB: I-95 OVER OLD RTE 159		
	& B.F.A.R.R.		
	ISLAND FALLS, ME.		
	CUSTOMER: CIAMBRO CORP.		
	DESIGNER: MAINE D.O.T. BRIDGE DIV.		
REV.	ORDER NO.	JOB NO.	DRAWING NO.
CHECKED			
DRAWN	RGM	578-60	62-1
160-55			